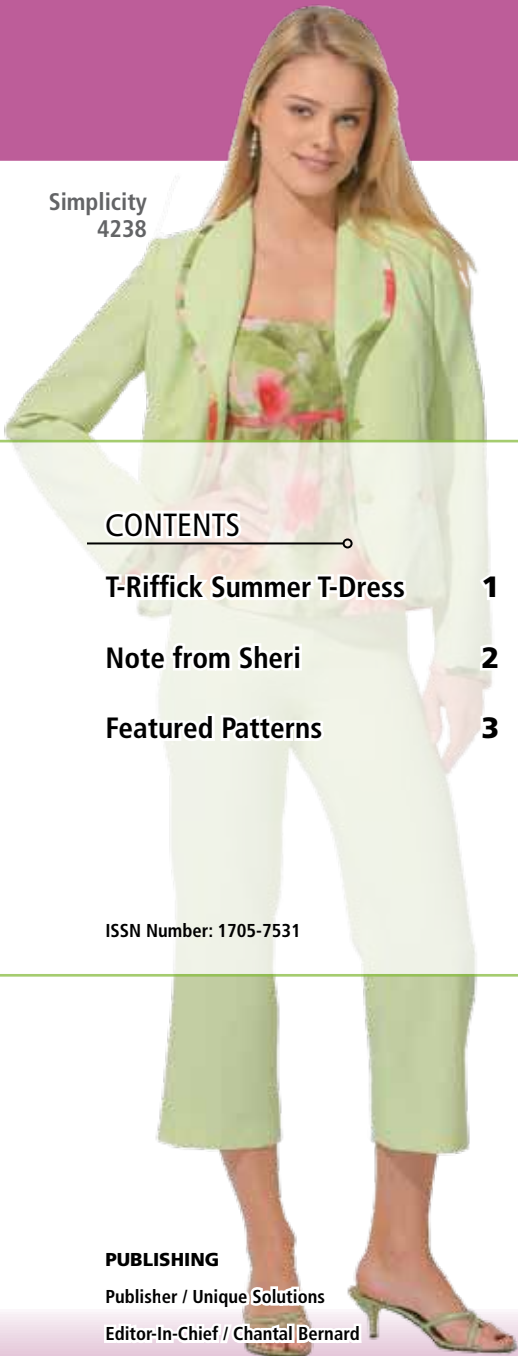


Simplicity  
4238



## CONTENTS

|                          |   |
|--------------------------|---|
| T-Riffick Summer T-Dress | 1 |
| Note from Sheri          | 2 |
| Featured Patterns        | 3 |

ISSN Number: 1705-7531

### PUBLISHING

Publisher / Unique Solutions  
 Editor-In-Chief / Chantal Bernard  
 Editors / Laura Simmons  
 Beverly Chapman

Contributors / Kathy Ruddy  
 Amy Baughman  
 Sheri McKillop

Graphic Designer / Ana Santos

Featuring Patterns by:



## T-Riffick Summer T-Dress

by Amy Baughman / Certified Unique Educator

- Expanded Pattern Supplement!
- New Styles!
- Great Selection!

Are you looking forward to the warm summer sun as we bring an end to another long winter season? If you are, now is the time to start planning your summer wardrobe.

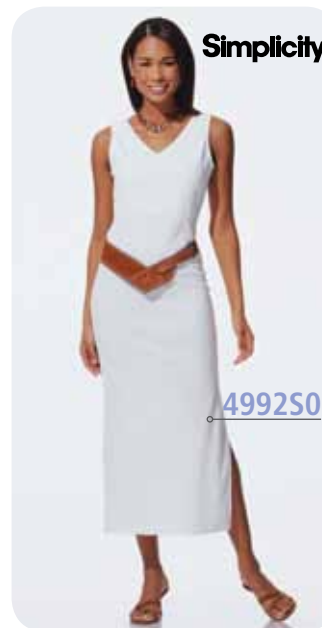
Nothing says summer like a cool T-shirt dress, plain or embellished, black or sage green - it always has a place in my wardrobe. My favorite Unique pattern is dress **4992S0**. This super easy dress made out of a yummy soft knit is mine to wear in about two hours of sewing time. I love this dress because, with a little ingenuity, I can change the neckline to a scoop to accent my jewelry, or make it asymmetrical if I am feeling creatively different.

Sometimes I reverse facings with a different colored fabric. Sewers needn't shy away from sewing with knits: with a few simple hints and skills, your knit-wear will look even better than ready-to-wear.

Pre-wash! But first, baste your fabric into a tube; this keeps your agitating washer from twisting and torturing your favorite new piece of fabric. Dry it the same as you will dry the finished garment in the future.

When you're cutting, make sure your fabric is not hanging over the edge of your cutting table. This will stretch the fabric as you cut it and will result in a

short or a strangely shaped piece. Using **weights** with a **rotary cutter** is my favorite way to cut out any garment.



I cannot stress enough the importance of **interfacing** the facing pieces, especially in the hemline, slits and sleeve facings. My favorite interfacing is a fusible tricot knit. This interfacing adds no bulk, keeps a crisp shape and helps the hems hang beautifully. Remember to preshrink the fusible knit interfacing by soaking it in a bowl of hot water until the water cools, then hang it up to dry. Don't cut corners by trying to put the interfacing in the washer and dryer; this will

take out all the fusible pebbles that make it the one of the seven wonders of the sewing world. (Yes, I like it that much!) Just remember to cut the interfacing so its stretch is the opposite of the stretch of the fabric so they cancel each other out.

Do you have a tendency to 'hmm' and 'ha' over how deep to make your hems? Don't skimp! The weight of a hem helps the garment hang nice and straight. If you choose not to believe me and choose a half-inch hem, your dress will ride up the back of your leg like a spider on a tricycle. For knits, I like a two inch hem on my dresses and a one inch hem on

continued on page 32...

Dear Clients,

Did the new date for Daylight Savings Time catch you by surprise? It sure caught me off guard! But, within just a few days, I found I had more energy, my evenings felt longer and I had renewed ambition. What a great time to start my spring and summer shopping spree! The perfect place to start was the fabric store.

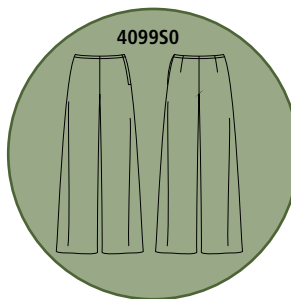


When I was at the fabric store, I found a beautiful hunter green worsted wool. For the last 20 years I have stayed away from green in every color and texture. You see, I went to a school that had uniforms and guess what color the uniforms were? You guessed it – green!

I have had dreams (sometimes nightmares) of this green-colored uniform I had to wear to school day in and day out. For that reason, I could never imagine myself purchasing any fabric, regardless of the quality, that would remind me of this uniform.

**Simplicity**

But there I was, considering this beautiful woolen fabric, wondering which patterns I could make with it. I decided on jacket **4099S2** and pants **4099S0**. I like the mandarin collar on the jacket and I put the tabs on the front but without buttons or closures. The pants have a dropped waist which, my teenaged daughter tells me, is hip.



Much to my surprise, I now have a great new green suit. I have received numerous compliments telling me, "what a fantastic color on you." I would never have imagined all this time that I could feel like this in green and you know, I have not once felt like I was wearing a school uniform!

Sometimes a little change in our lives is a good thing!

In Stitches,



E-mail your stories and photos to [clientservices@uniquepatterns.com](mailto:clientservices@uniquepatterns.com)

## Commitment to Fit

Unique is pleased to present our **Commitment to Fit**. If you experience a fit issue with your pattern within one year from the date of purchase, please contact Client Services so we may understand the problem and correct the fit of your pattern. In order to fully understand the nature of your fit issue, it is necessary for you to have sewn your pattern. In the unlikely event we are unable to provide you with a pattern that fits, we will refund the purchase price of the pattern upon receipt of the returned goods. Shipping and handling fees are non-refundable.

**Client Services:**

1-800-543-4739 or [clientservices@uniquepatterns.com](mailto:clientservices@uniquepatterns.com).

**New!**

We now carry **weft insertion interfacing** in **BLACK**.

Call Client Services at 1-800-543-4739 for details.

# Featured Patterns

**499250** \$16.49US / \$22.29CDN

**Body Code:** ▲▼×●◆■

**Fit:** fitted

**Ease at Bust:** 1.00 in. (2.5 cm)

**Ease at Hip:** 1.50 in. (3.8 cm)

**Lining:** partially lined

**Neck:** V-neck

**Sleeves:** sleeveless

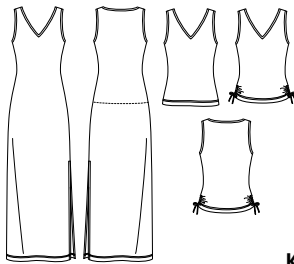
**Skirt Style:** side seam slit

**Other Features:** optional side ties

**Finished Length:** 4 1/2" (11.5 cm) below waist or 5" (12.8 cm) above ankle

**Knit / Contrast Type:** For stretch knits only.

**Suggested Fabrics:** cotton interlock, jersey, lt. wt. double knit, matte jersey, stretch velvet



**499252** \$15.99US / \$21.59CDN

**Body Code:** ▲▼×●◆■

**Fit:** semi-fitted

**Ease at Hip:** 3.50 in. (9.0 cm)

**Waist:** elastic waist

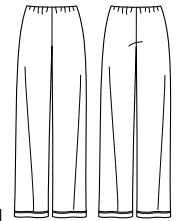
**Pant Leg:** wide leg

**Finished Length:** at ankle

**Notions:** 1" (25 mm) wide elastic equal to waist measurement

**Knit / Contrast Type:** For stretch knits only.

**Suggested Fabrics:** cotton interlock, jersey, lt. wt. double knit, matte jersey, stretch velvet



**499251** \$14.99US / \$19.99CDN

**Body Code:** ▲▼×●◆■

**Fit:** fitted

**Ease at Hip:** 3.00 in. (7.8 cm)

**Waist:** elastic waist

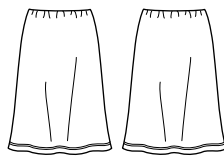
**Skirt Style:** A-line

**Finished Length:** at knee

**Notions:** 1" (25 mm) wide elastic equal to waist measurement

**Knit / Contrast Type:** For stretch knits only.

**Suggested Fabrics:** cotton interlock, jersey, lt. wt. double knit, matte jersey, stretch velvet



**499253** \$15.99US / \$21.59CDN

**Body Code:** ▲▼×●◆■

**Fit:** loose fitting

**Ease at Bust:** 7.50 in. (19.0 cm)

**Ease at Hip:** 8.00 in. (20.3 cm)

**Collar:** shirt collar

**Sleeves:** short sleeves or long sleeve with style variations

**Bodice Style:** bust darts

**Closure:** button front

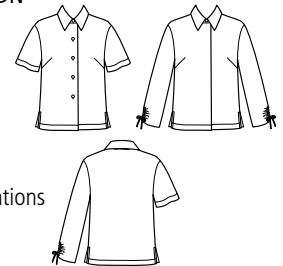
**Other Features:** 4" (10.3 cm) side seam slits

**Finished Length:** 8" (20.3cm) below waist

**Interfacing:** 7/8 yd. (0.8 m)

**Notions:** five 5/8" (16 mm) buttons, one 5/8" (16 mm) button, single-fold bias tape

**Suggested Fabrics:** challis, cotton, double georgette, lt. wt. linen blends, satin, silks and silk types, taffeta



**Simplicity**

This supplement contains most of the newest Simplicity and New Look patterns – keep it handy!

To see a complete and current listing of all the Unique, Simplicity and New Look styles, visit [www.uniquepatterns.com](http://www.uniquepatterns.com) and click on Catalog. You can search by pattern number, pattern type, designer or body type.

Sign in with your Client Number and phone number and click on Education to refresh yourself on understanding ease preferences and fabric fitting before choosing your pattern purchases.



## Featured Patterns

**4149S0** \$16.99US / \$22.99CDN

**Body Code:** ▲▼×●◆■

**Fit:** semi-fitted

**Ease at Bust:** 5.00 in. (12.8 cm)

**Ease at Hip:** 5.50 in. (14.0 cm)

**Neck:** round neck with slit and opening variations

**Collar:** neck band

**Sleeves:** three-quarter length set-in sleeves with flounces

**Sleeve Details:** flared sleeve

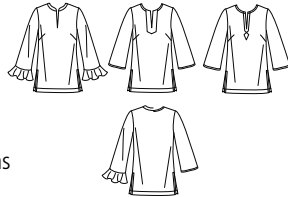
**Other Features:** side seam slits

**Finished Length:** 13" (33 cm) below waist

**Interfacing:** 1/2 yd. (0.5 m)

**Notions:** one pkg. middy braid (optional)

**Suggested Fabrics:** challis, cotton, crepe-backed satin, handkerchief linen, matte jersey, pique, poplin, twill



**4149S3** \$15.99US / \$21.59CDN

**Body Code:** ▲▼×●◆■

**Fit:** fitted

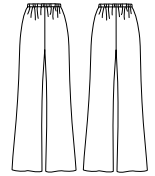
**Ease at Hip:** 2.50 in. (6.3 cm)

**Waist:** elastic waist

**Pant Leg:** slightly flared

**Notions:** 1/2" (13 mm) wide elastic equal to waist measurement

**Suggested Fabrics:** challis, cotton, crepe-backed satin, heavy interlock, matte jersey, pique, poplin, twill



**4149S1** \$16.99US / \$22.99CDN

**Body Code:** ▲▼×●◆■

**Fit:** semi-fitted

**Ease at Bust:** 5.00 in. (12.8 cm)

**Ease at Hip:** 5.00 in. (12.8 cm)

**Neck:** round neck with slit and opening variations

**Sleeves:** sleeveless

**Other Features:** side seam slits

**Finished Length:** 11" (28 cm) below waist

**Suggested Fabrics:** challis, cotton, crepe-backed satin, handkerchief linen, matte jersey, pique, poplin, twill



**4149S2** \$14.99US / \$19.99CDN

**Body Code:** ▲▼×●◆■

**Fit:** fitted

**Ease at Hip:** 2.00 in. (5.0 cm)

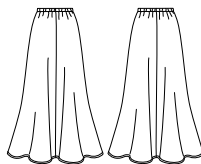
**Waist:** elastic waist

**Skirt Style:** four panel

**Finished Length:** 4 1/2" (11.5 cm) above ankle

**Notions:** 1/2" (13 mm) wide elastic equal to waist measurement

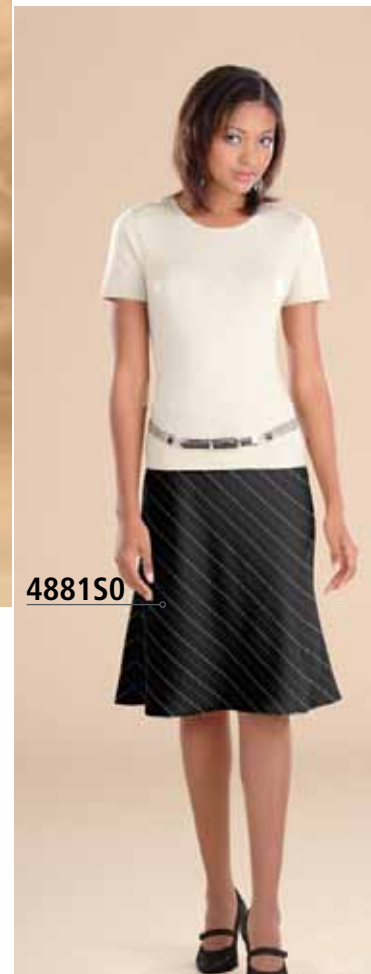
**Suggested Fabrics:** challis, cotton, crepe-backed satin, handkerchief linen, matte jersey



Scarf pattern included



**Simplicity**



**Simplicity**

## Featured Patterns

**4881S0** \$14.99US / \$19.99CDN

**Body Code:** ▲▼×●◆■

**Fit:** loose fitting

**Ease at Hip:** 7.50 in. (18.8 cm)

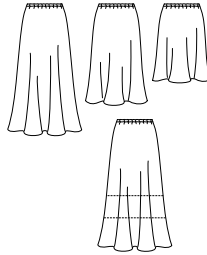
**Waist:** elastic waist

**Skirt Style:** bias cut

**Finished Length:** 5" (12.8 cm) above knee or  
1/2" (1.3 cm) below knee or  
6" (15.3 cm) above ankle

**Notions:** 1/2" (13 mm) wide elastic equal to waist measurement

**Suggested Fabrics:** challis, crepe, crepe de chine, crepe-backed satin,  
double georgette, jacquard, lt. wt. wool, lt. wt. wool blends



**4881S1\*** \$16.99US / \$22.99CDN

**Body Code:** ▲▼×●◆■

**Fit:** semi-fitted

**Ease at Hip:** 3.50 in. (9.0 cm)

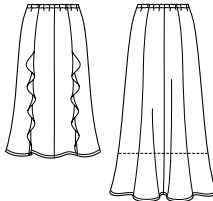
**Waist:** elastic waist

**Skirt Style:** eight panel

**Other Features:** optional ruffle

**Finished Length:** at knee or 4" (10.3 cm) above ankle

**Notions:** 1/2" (13 mm) wide elastic equal to  
waist measurement



**4881S2\*** \$16.99US / \$22.99CDN

**Body Code:** ▲▼×●◆■

**Fit:** semi-fitted

**Ease at Hip:** 3.50 in. (9.0 cm)

**Waist:** elastic waist

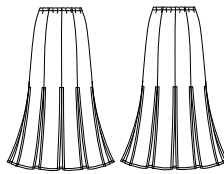
**Skirt Style:** slit openings in gores,  
contrast underskirt

**Other Features:** topstitching

**Finished Length:** 4 1/2" (11.5 cm)  
above ankle

**Notions:** 1/2" (13 mm) wide  
elastic equal to  
waist measurement

**Knit / Contrast Type:** Crepe or charmeuse  
for underlining.



4881S2

**Simplicity**

**\*Suggested fabrics for these patterns:**

challis, crepe, crepe de chine, crepe-backed satin, double georgette, jacquard

**6159N0\*** \$16.99US / \$22.99CDN

**Body Code:** ▲▼×●◆■

**Fit:** semi-fitted

**Ease at Bust:** 4.00 in. (10.3 cm)

**Ease at Hip:** 4.00 in. (10.3 cm)

**Lining:** fully lined

**Collar:** notched collar

**Sleeves:** three-quarter-length  
set-in sleeves with slit at hem

**Bodice Style:** front and back contour darts

**Back:** center back seam

**Closure:** button front

**Finished Length:** 5 1/2" (14 cm) below waist

**Interfacing:** 1 3/8 yd. (1.3 m)

**Notions:** three 3/4" (19 mm) buttons



**6159N1\*** \$14.99US / \$19.99CDN

**Body Code:** ▲▼×●◆■

**Fit:** loose fitting

**Ease at Hip:** 8.00 in. (20.3 cm)

**Waist:** separate waistband,  
dropped waist

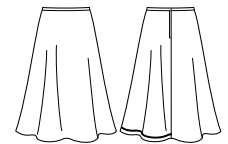
**Skirt Style:** A-line

**Closure:** center back zipper

**Finished Length:** 2 1/2" (6.3 cm) below knee

**Interfacing:** 1 1/8 yd. (1 m)

**Notions:** 7" (18 cm) zipper, hook and eye closure



**6159N2\*** \$14.99US / \$19.99CDN

**Body Code:** ▲▼×●◆■

**Fit:** semi-fitted

**Ease at Hip:** 4.50 in. (11.5 cm)

**Waist:** separate waistband,  
dropped waist

**Skirt Style:** straight cut

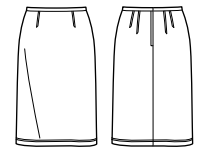
**Darts / Pleats:** two front darts, four  
back darts

**Closure:** center back zipper

**Finished Length:** 2 1/2" (6.3 cm) above  
knee

**Interfacing:** 1 1/8 yd. (1 m)

**Notions:** 7" (18 cm) zipper,  
hook and eye closure



**\*Suggested fabrics for these patterns:**

cotton, cotton blend, crepe, denim, linen, linen blend, shantung

6159N0



6159N1

**NEW  
LOOK**

## Featured Patterns

**5189S0** \$19.99US / \$26.99CDN

**Body Code:** ▲▼×●◆■

**Fit:** semi-fitted

**Ease at Bust:** 5.00 in. (12.8 cm)

**Ease at Hip:** 14.00 in. (35.5 cm)

**Neck:** V-neck

**Sleeves:** short sleeves or short flutter sleeves or three-quarter length set-in sleeves with flounces

**Bodice Style:** front and back princess seams

**Skirt Style:** slightly flared

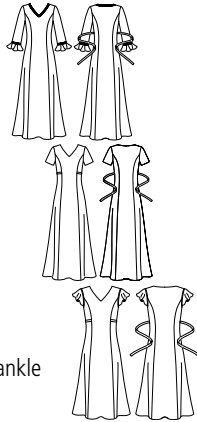
**Other Features:** ties

**Finished Length:** at knee or 5" (12.8 cm) above ankle

**Interfacing:** 1/2 yd. (0.5 m)

**Notions:** hem tape

**Suggested Fabrics:** challis, cotton blend, crepe, crepe-backed satin, double georgette, handkerchief linen, lt. wt. denim, silk-like linen



**5189S1** \$19.49US / \$26.29CDN

**Body Code:** ▲▼×●◆■

**Fit:** semi-fitted

**Ease at Bust:** 5.00 in. (12.8 cm)

**Ease at Hip:** 14.00 in. (35.5 cm)

**Neck:** V-neck

**Sleeves:** sleeveless

**Bodice Style:** front and back princess seams

**Skirt Style:** slightly flared

**Other Features:** ties

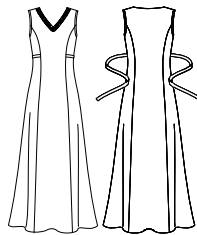
**Finished Length:** 5" (12.8 cm) above ankle

**Interfacing:** 1/2 yd. (0.5 m)

**Notions:** 1 1/4 yd. to 1 5/8 yd. (1.2 m to 1.5 m) of

1" (25 mm) wide lace trim, hem tape

**Suggested Fabrics:** challis, cotton blend, crepe, crepe-backed satin, double georgette, handkerchief linen, lt. wt. denim, silk-like linen



**5189S2** \$19.49US / \$26.29CDN

**Body Code:** ▲▼×●◆■

**Fit:** semi-fitted

**Ease at Bust:** 5.00 in. (12.8 cm)

**Ease at Hip:** 14.00 in. (35.5 cm)

**Neck:** u-neck

**Sleeves:** short set-in sleeves or three-quarter-length set-in sleeves with slit at hem

**Bodice Style:** front and back princess seams

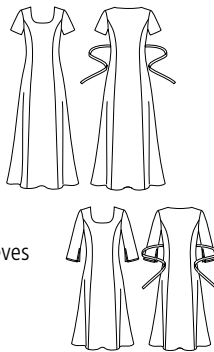
**Skirt Style:** slightly flared

**Finished Length:** at knee or 5" (12.8 cm) above ankle

**Interfacing:** 1/2 yd. (0.5 m)

**Notions:** hem tape

**Suggested Fabrics:** challis, cotton blend, crepe, crepe-backed satin, double georgette, handkerchief linen, lt. wt. denim, silk-like linen



**5801S0** \$16.99US / \$22.99CDN

**Body Code:** ▲▼×●◆■

**Fit:** loose fitting

**Ease at Bust:** 5.50 in. (14.0 cm)

**Ease at Hip:** 5.50 in. (14.0 cm)

**Collar:** notched collar

**Sleeves:** short set-in sleeves with fold-back cuffs or long set-in sleeves with pleated cuffs

**Bodice Style:** front and back pleats, back yoke with forward shoulder seams

**Closure:** button front

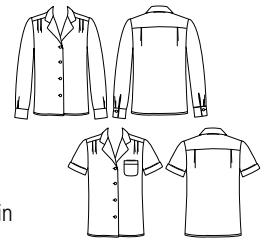
**Pocket Style:** optional chest pocket

**Finished Length:** 8 1/2" (21.5 cm) below waist

**Interfacing:** 1 1/4 yd. (1.1 m)

**Notions:** four or six 5/8" (16 mm) buttons

**Suggested Fabrics:** challis, chambray, charmeuse, cotton, cotton blend, crepe, double georgette, georgette, handkerchief linen, lt. wt. faille, silk, silk-like fabric



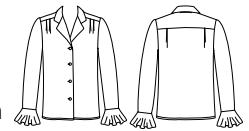
**5801S1** \$16.99US / \$22.99CDN

**Body Code:** ▲▼×●◆■

Visit

[www.uniquepatterns.com](http://www.uniquepatterns.com)

for complete description



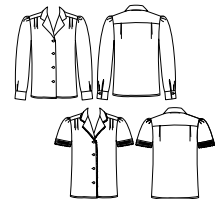
**5801S2** \$16.99US / \$22.99CDN

**Body Code:** ▲▼×●◆■

Visit

[www.uniquepatterns.com](http://www.uniquepatterns.com)

for complete description



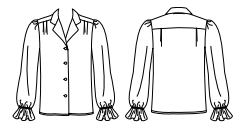
**5801S3** \$16.99US / \$22.99CDN

**Body Code:** ▲▼×●◆■

Visit

[www.uniquepatterns.com](http://www.uniquepatterns.com)

for complete description



**Simplicity**

## Featured Patterns

**584450\*** \$14.99US / \$19.99CDN

**Body Code:** ▲▼X●◆■

**Fit:** semi-fitted

**Ease at Waist:** 1.00 in. (2.5 cm)

**Ease at Hip:** 5.00 in. (12.8 cm)

**Waist:** separate waistband

**Skirt Style:** A-line

**Darts / Pleats:** two back darts

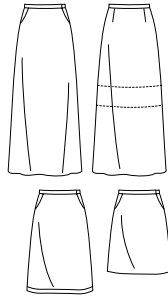
**Closure:** at waist of trouser pocket

**Pocket Style:** trouser pocket

**Finished Length:** 5 1/2" (14 cm) above knee or 1/2" (1.3 cm) below knee or 4 1/2" (11.5 cm) above ankle

**Interfacing:** 1 1/4 yd. (1.1 m)

**Notions:** hook and eye closure



**584451\*** \$16.49US / \$22.29CDN

**Body Code:** ▲▼X●◆■

**Fit:** semi-fitted

**Ease at Waist:** 1.00 in. (2.5 cm)

**Ease at Hip:** 5.00 in. (12.8 cm)

**Waist:** separate waistband

**Darts / Pleats:** four back darts

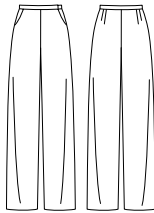
**Closure:** at waist of trouser pocket

**Pocket Style:** trouser pocket

**Pant Leg:** straight wide leg

**Interfacing:** 1 1/4 yd. (1.1 m)

**Notions:** hook and eye closure



**584452\*** \$16.49US / \$22.29CDN

**Body Code:** ▲▼X●◆■

**Fit:** semi-fitted

**Ease at Waist:** 1.00 in. (2.5 cm)

**Ease at Hip:** 5.00 in. (12.8 cm)

**Waist:** separate waistband

**Darts / Pleats:** four back darts

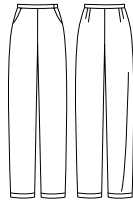
**Closure:** at waist of trouser pocket

**Pocket Style:** trouser pocket

**Pant Leg:** tapered leg

**Finished Length:** 1" (2.5 cm) above floor

**Notions:** hook and eye closure



**6351N0** \$17.49US / \$23.59CDN

**Body Code:** ▲▼X●◆■

**Fit:** semi-fitted

**Ease at Bust:** 3.50 in. (9.0 cm)

**Ease at Hip:** 6.50 in. (16.5 cm)

**Neck:** V-neck

**Sleeves:** sleeveless

**Bodice Style:** French darts

**Back:** center back seam

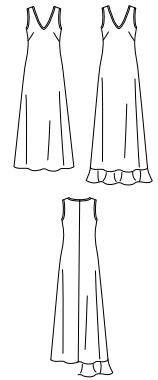
**Skirt Style:** A-line

**Other Features:** optional flounce at hem

**Finished Length:** 4 1/4" (10.8 cm) above ankle or 3" (7.8 cm) above floor

**Notions:** single-fold bias tape

**Suggested Fabrics:** crepe, double georgette, georgette, jacquard, linen, linen blend, novelty sheers, silks and silk types



**6351N1** \$14.99US / \$19.99CDN

**Body Code:** ▲▼X●◆■

**Fit:** semi-fitted

**Ease at Bust:** 3.50 in. (9.0 cm)

**Ease at Hip:** 6.00 in. (15.3 cm)

**Neck:** V-neck

**Sleeves:** sleeveless

**Bodice Style:** French darts

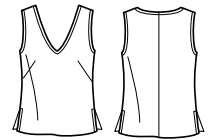
**Back:** center back seam

**Other Features:** side seam slits

**Finished Length:** 4" (10.3 cm) below waist

**Notions:** single-fold bias tape

**Suggested Fabrics:** crepe, jacquard, linen, linen blend, silks and silk types



**6351N2** \$14.99US / \$19.99CDN

**Body Code:** ▲▼X●◆■

**Fit:** semi-fitted

**Ease at Hip:** 4.00 in. (10.3 cm)

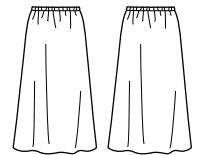
**Waist:** elastic waist

**Skirt Style:** A-line

**Finished Length:** below mid knee

**Notions:** 1/2" (13 mm) wide elastic equal to waist measurement

**Suggested Fabrics:** crepe, jacquard, linen, linen blend, silks and silk types



**6351N3** \$17.99US / \$24.29CDN

**Body Code:** ▲▼X●◆■

**Fit:** semi-fitted

**Ease at Bust:** 5.00 in. (12.8 cm)

**Ease at Hip:** 7.00 in. (17.8 cm)

**Sleeves:** three-quarter length set-in sleeves or three-quarter-length set-in sleeves with flounce

**Bodice Style:** crossover front

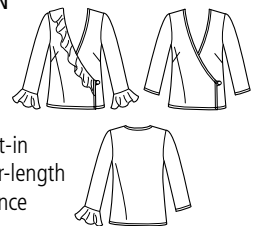
**Closure:** button/loop closing

**Other Features:** optional neck and sleeve flounce

**Finished Length:** 9" (22.8 cm) below waist

**Notions:** one 7/8" (22 mm) button, 3/4 yd. (0.7 m) of 3/8" (10 mm) wide ribbon, 7/8" (23 mm) wide single fold bias tape

**Suggested Fabrics:** crepe, double georgette, georgette, jacquard, linen, linen blend, novelty sheers, silks and silk types



### \*Suggested fabrics for these patterns:

challis, chambray, corduroy, crepe, lt. wt. denim, lt. wt. wool, lt. wt. wool blends, poplin, stretch wovens, synthetic leather, synthetic suede, twill



6351N3

6351N0

**NEW  
LOOK**

## Featured Patterns

**4275S0** \$15.99US / \$21.59CDN

**Body Code:** ▲▼X●◆■

**Fit:** fitted

**Ease at Bust:** -1.50 in. (-3.8 cm)

**Ease at Hip:** -0.50 in. (-1.3 cm)

**Neck:** square neck

**Sleeves:** cap sleeves

**Bodice Style:** pullover

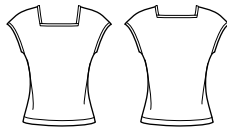
**Finished Length:** 5" (12.8 cm) below waist

**Notions:** seam binding

**Knit / Contrast Type:** For stretch knits only.

**Suggested Fabrics:** cotton interlock, jersey interlock, jersey knit, lt. wt. double knit

**Comments:** Instructions for belt included.



**4275S1** \$16.49US / \$22.29CDN

**Body Code:** ▲▼X●◆■

**Fit:** fitted

**Ease at Hip:** 3.00 in. (7.8 cm)

**Waist:** contour waistband, dropped waist

**Darts / Pleats:** two back darts

**Closure:** side zipper

**Pant Leg:** wide slightly flared

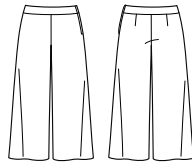
**Finished Length:** 6 1/2" (16.5 cm) below knee

**Interfacing:** 3/8 yd. (0.4 m)

**Notions:** 7" (18 cm) zipper, hook and eye closure, 1/4" (6 mm) wide twill tape

**Suggested Fabrics:** chambray, damask, denim, linen, pique, poplin, shantung, twill

**Comments:** Instructions for belt included.



**4275S2** \$16.49US / \$22.29CDN

**Body Code:** ▲▼X●◆■

**Fit:** fitted

**Ease at Hip:** 3.00 in. (7.8 cm)

**Waist:** contour waistband, dropped waist

**Darts / Pleats:** two back darts

**Closure:** side zipper

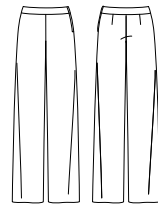
**Pant Leg:** straight leg

**Interfacing:** 3/8 yd. (0.4 m)

**Notions:** 7" (18 cm) zipper, hook and eye closure, 1/4" (6 mm) wide twill tape

**Suggested Fabrics:** chambray, damask, denim, linen, pique, poplin, shantung, twill

**Comments:** Instructions for belt included.



**4275S3** \$16.99US / \$22.99CDN

**Body Code:** ▲▼X●◆■

**Fit:** semi-fitted

**Ease at Bust:** 4.50 in. (11.50 cm)

**Ease at Hip:** 6.00 in. (15.3 cm)

**Collar:** mandarin collar

**Sleeves:** long sleeves with turn-back cuffs

**Bodice Style:** front contour darts

**Back:** center back seam

**Closure:** button front

**Pocket Style:** four front patch pockets

**Other Features:** back slit

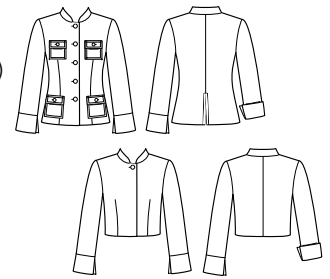
**Finished Length:** 1" (2.5 cm) below waist or 8" (20.3 cm) below waist

**Interfacing:** 2 5/8 yd. (2.4 m)

**Notions:** four 1/2" (13 mm) buttons, five 3/4" (19 mm) buttons, double fold bias tape

**Suggested Fabrics:** chambray, damask, denim, linen, pique, poplin, shantung, twill

**Comments:** Instructions for belt included.



**Simplicity**

**4275S0**

**4275S1**

**4275S3**

**4275S1**

**4275S3**

**4275S2**

Check [www.uniquepatterns.com](http://www.uniquepatterns.com) regularly for Client specials and promotions.

## Featured Patterns

**4368S0** \$15.99US / \$21.59CDN

**Body Code:** ▲▼×●◆■

**Fit:** semi-fitted

**Ease at Bust:** 5.00 in. (12.8 cm)

**Ease at Hip:** 5.00 in. (12.8 cm)

**Neck:** square neck in front, round in back

**Sleeves:** short raglan sleeves

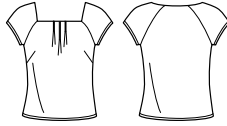
**Bodice Style:** bust darts

**Other Features:** front tucks

**Finished Length:** 5" (12.8 cm) below waist

**Interfacing:** 3/8 yd. (0.4 m)

**Suggested Fabrics:** charmeuse, crepe de chine, silks and silk types, washed silk



**4368S1** \$14.99US / \$19.99CDN

**Body Code:** ▲▼×●◆■

**Fit:** fitted

**Ease at Hip:** 2.50 in. (6.3 cm)

**Waist:** narrow waistband, dropped waist

**Skirt Style:** flared, princess lines

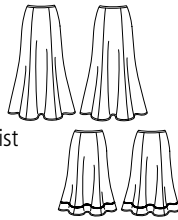
**Closure:** side zipper

**Other Features:** optional trim

**Finished Length:** at knee or 6" (15.3 cm) above ankle

**Notions:** 7" (18 cm) invisible zipper, hook and eye closure, optional trim

**Suggested Fabrics:** crepe, linen, lt. wt. wool, lt. wt. wool blends, silk-like linen, velvet, wool crepe



**4368S2** \$16.49US / \$22.29CDN

**Body Code:** ▲▼×●◆■

**Fit:** fitted

**Ease at Hip:** 3.00 in. (7.8 cm)

**Waist:** narrow waistband, dropped waist

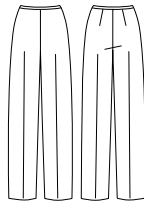
**Darts / Pleats:** two back darts

**Closure:** side zipper

**Pant Leg:** straight leg

**Notions:** 7" (18 cm) invisible zipper, hook and eye closure

**Suggested Fabrics:** crepe, linen, lt. wt. wool, lt. wt. wool blends, silk-like linen, velvet, wool crepe



**4368S3** \$19.99US / \$26.99CDN

**Body Code:** ▲▼×●◆■

**Fit:** semi-fitted

**Ease at Bust:** 5.00 in. (12.8 cm)

**Ease at Hip:** 6.00 in. (15.3 cm)

**Lining:** fully lined

**Collar:** shawl collar

**Sleeves:** long set-in sleeves

**Sleeve Details:** optional trim, side slits

**Bodice Style:** front yoke, front and back princess seams

**Back:** center back seam

**Closure:** button front

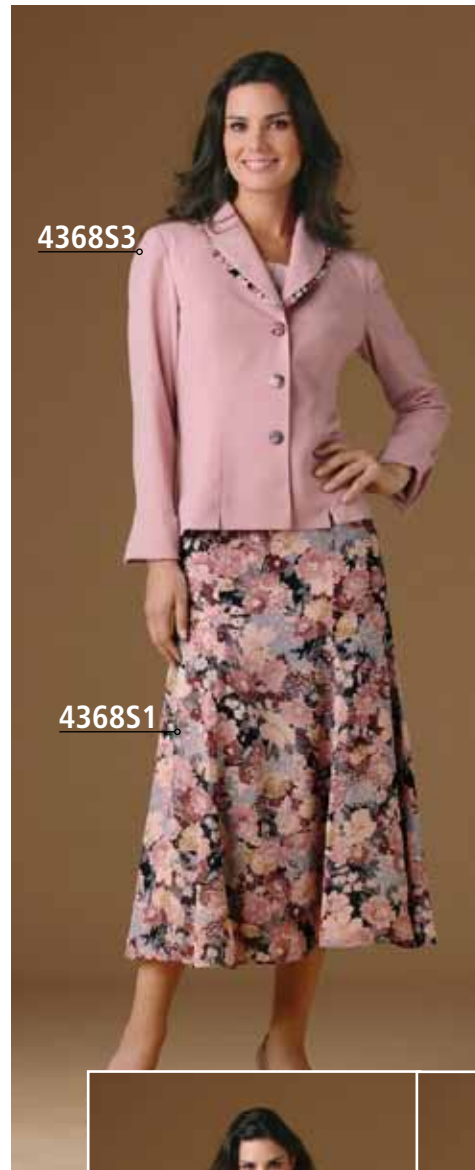
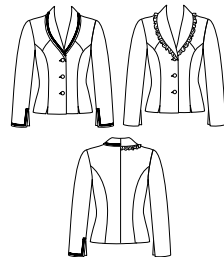
**Other Features:** front hemline slits, optional trim

**Finished Length:** 6" (15.3 cm) below waist

**Interfacing:** 2 1/4 yd. (2.1 m)

**Notions:** 1/4" (0.6 cm) shoulder pads, three 7/8" (22 mm) buttons, optional trim

**Suggested Fabrics:** crepe, linen, lt. wt. wool, lt. wt. wool blends, silk-like linen, velvet, wool crepe



4368S3

4368S1

**Simplicity**

4368S0

4368S2

4368S3

4368S2



**4427S0** \$19.99US / \$26.99CDN

**Body Code:** ▲▼X●◆■

**Fit:** semi-fitted

**Ease at Bust:** 3.50 in. (9.0 cm)

**Ease at Hip:** 4.00 in. (10.3 cm)

**Neck:** wide V-neck

**Sleeves:** cap set-in sleeves

**Bodice Style:** front ties, front princess seams, back contour darts

**Back:** center back seam

**Closure:** side zipper

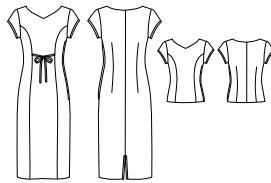
**Other Features:** back slit

**Finished Length:** 4" (10.3 cm) below waist or 1/2" (1.3 cm) above knee

**Interfacing:** 3/8 yd. (0.4 m)

**Notions:** 14" (35 cm) zipper

**Suggested Fabrics:** brocade, crepe, damask, linen, lt. wt. wool, pique, satin, velvet, washed silk-like fabric



**4427S1** \$14.99US / \$19.99CDN

**Body Code:** ▲▼X●◆■

**Fit:** fitted

**Ease at Hip:** 3.00 in. (7.8 cm)

**Lining:** fully lined

**Waist:** dropped waist, waist stay

**Skirt Style:** straight cut, back slit

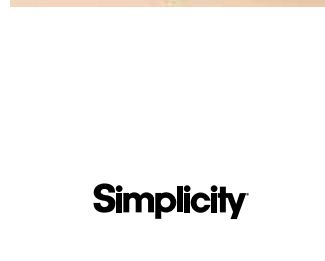
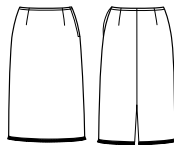
**Darts / Pleats:** two front darts, two back darts

**Closure:** side zipper

**Finished Length:** 1 1/2" (3.8 cm) above knee

**Notions:** 7" (18 cm) zipper, hook and eye closure, 1/2" (13 mm) wide twill tape

**Suggested Fabrics:** brocade, crepe, damask, linen, lt. wt. wool, pique, satin, velvet, washed silk-like fabric



**4427S2** \$16.49US / \$22.29CDN

**Body Code:** ▲▼X●◆■

**Fit:** fitted

**Ease at Hip:** 3.00 in. (7.8 cm)

**Waist:** dropped waist, waist stay

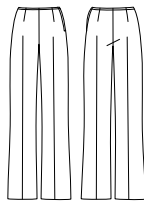
**Darts / Pleats:** two front darts, two back darts

**Closure:** side zipper

**Pant Leg:** straight leg

**Notions:** 7" (18 cm) zipper, hook and eye closure, 1/2" (13 mm) wide twill tape

**Suggested Fabrics:** brocade, crepe, damask, linen, lt. wt. wool, pique, satin, velvet, washed silk-like fabric



**4427S3** \$19.99US / \$26.99CDN

**Body Code:** ▲▼X●◆■

**Fit:** semi-fitted

**Ease at Bust:** 5.00 in. (12.8 cm)

**Ease at Hip:** 7.50 in. (18.8 cm)

**Lining:** fully lined

**Collar:** contrast collar options, one-piece collar

**Sleeves:** long two-piece set-in sleeves

**Bodice Style:** underarm princess panels

**Back:** center back seam

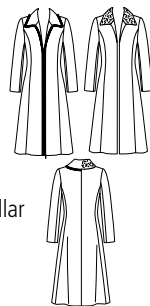
**Other Features:** optional self fringe

**Finished Length:** 1/2" (1.3 cm) below knee

**Interfacing:** 3 yd. (2.8 m)

**Notions:** 1/4" (0.6 cm) shoulder pads

**Suggested Fabrics:** brocade, crepe, damask, linen, lt. wt. wool, pique, satin, tweed, velvet



Simplicity

## Featured Patterns

**4095S0** \$16.99US / \$22.99CDN

**Body Code:** ▲▼X●◆■

**Fit:** fitted

**Ease at Bust:** 0.50 in. (1.3 cm)

**Ease at Hip:** 0.50 in. (1.3 cm)

**Neck:** V-neck

**Sleeves:** three-quarter length set-in sleeves

**Bodice Style:** wrap front, forward shoulder seams with gathers

**Finished Length:** 5" (12.8 cm) below waist

**Notions:** seam binding

**Knit / Contrast Type:** For stretch knits only.

**Suggested Fabrics:** jersey, lt. wt. double knit, matte jersey, novelty knit, stretch velvet



**4095S1** \$16.99US / \$22.99CDN

**Body Code:** ▲▼X●◆■

**Fit:** fitted

**Ease at Bust:** 0.50 in. (1.3 cm)

**Ease at Hip:** 2.50 in. (6.3 cm)

**Neck:** cinched front neck, V-neck

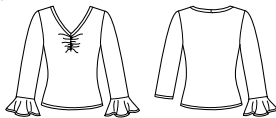
**Sleeves:** three-quarter length set-in sleeves with flounces

**Finished Length:** 5" (12.8 cm) below waist

**Notions:** seam binding

**Knit / Contrast Type:** For stretch knits only.

**Suggested Fabrics:** jersey, lt. wt. double knit, matte jersey, novelty knit, stretch velvet



**4095S2** \$15.99US / \$21.59CDN

**Body Code:** ▲▼X●◆■

**Fit:** fitted

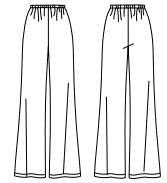
**Ease at Hip:** 2.50 in. (6.3 cm)

**Waist:** elastic waist

**Pant Leg:** wide leg

**Notions:** 1/2" (13 mm) wide elastic equal to waist measurement

**Suggested Fabrics:** challis, double georgette, jersey, lt. wt. double knit, lt. wt. linen, lt. wt. linen blends, matte jersey, poplin, stretch velvet, twill



**4095S3** \$14.99US / \$19.99CDN

**Body Code:** ▲▼X●◆■

**Fit:** semi-fitted

**Ease at Hip:** 5.00 in. (12.8 cm)

**Waist:** elastic waist

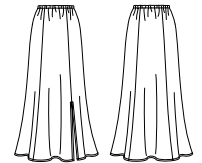
**Skirt Style:** gored skirt

**Other Features:** front slit

**Finished Length:** 4 1/2" (11.5 cm) above ankle

**Notions:** 1/2" (13 mm) wide elastic equal to waist measurement

**Suggested Fabrics:** challis, double georgette, jersey, lt. wt. double knit, lt. wt. linen, lt. wt. linen blends, matte jersey, poplin, stretch velvet, twill



**4095S4** \$14.99US / \$19.99CDN

**Body Code:** ▲▼X●◆■

**Fit:** semi-fitted

**Ease at Hip:** 5.00 in. (12.8 cm)

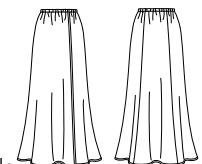
**Waist:** elastic waist

**Skirt Style:** wrap

**Finished Length:** 4 1/2" (11.5 cm) above ankle

**Notions:** 1/2" (13 mm) wide elastic equal to waist measurement

**Suggested Fabrics:** challis, double georgette, jersey, lt. wt. double knit, lt. wt. linen, matte jersey, poplin, stretch velvet, twill



4095S0

4095S4

**Simplicity**

## Body Code Chart

- ▼ **Triangle:** Broad shoulders and/or a larger bust with narrow hips
- ▲ **Inverted Triangle:** Narrow shoulders and/or a smaller bust with full hips and/or thighs
- ⌵ **Hour Glass:** Equally proportioned in the bust and hips with a trim waist
- **Circle:** Rounded in the shoulders, arms, bust, waist and hip area
- ◆ **Diamond:** Narrow in the shoulders and hips with a fuller waist, wide midriff or upper hip
- **Rectangle:** Balanced above and below the waist with little or no waist definition

continued from page 1...

sleeves. Check your pattern to make the right adjustments. Other kinds of fabric may require a different hem length.

Get the sewing machine and serger ready. Please, please, please put in a new needle. I cannot tell you what a difference in seam quality there is by taking this simple step. You can find needles that are for knits only; look for a stretch size 80/12 if the knit has lycra®, or a jersey or ballpoint needle if the fabric does not contain lycra®. A knit-only needle will help prevent skipped stitches.

Some sewing machines have a tendency to create wavy seams. Wavy is only good for hair and flags. The waves occur because there is too much pressure on the fabric from the presser foot. Reduce the pressure to half your normal setting. Your machine may have a knob on the top or a dial on the side, check your owner's manual. Proper stitch length should be around 2.5 to 3.0. You may also have a stretch stitch that looks like a little lightning bolt. This is a great stitch, but very difficult to un-sew (rip out). The correct presser foot will help keep the ruffles and waves away. Use the foot with the flattest bottom, as this keeps the fabric from being pulled up into any channels that are under some feet.

Pattern **499250** is the perfect dress for your serger or overlock machine. Choose a three-thread stitch as this offers more stretch than a four-thread. And yes, please use a matching

color, at least in the needle thread. If your fabric stretches as you serge, change your differential feed to the symbol that looks like a gathered piece of fabric, or a positive number. Check your owner's manual or call your dealer for advice. Whatever you do, sew a few sample seams to find what is best for you.

Remember  
to fabric fit  
as you sew.

Sewing can give you a sense of relaxation and accomplishment. And it can give you a T-riffick knit dress perfect for anticipating a great summer!

Best Stitches,

Amy Baughman

To learn how to Fabric Fit, sign into  
[www.uniquepatterns.com](http://www.uniquepatterns.com) with your  
phone number and Client ID and choose 'Education'.

## Unique Patterns

15010 Henry Ride Heights  
Colorado Springs, CO  
80926 USA

Copyright © 2007 Unique Patterns. All Rights Reserved. Reproduction in whole or in part not permitted without consent. All contents and images are protected under international copyright law. Unique Patterns and associated likeness is a recognized trademark of Unique Solutions Design Ltd. a private Canadian company. Simplicity is a registered trademark of Simplicity Pattern Co. Inc. New Look is a registered trademark of Simplicity Pattern Co. Inc.

Un*ique*™ *Times*